



S. I. No. M20-39

Date: 12-2-76

SERVICE INSTRUCTION**SUBJECT: INTERIOR DOOR HANDLE REPLACEMENT**

| | | |
|-------------------------|--------------|---|
| MODELS AFFECTED: | <u>Model</u> | <u>Serial No. Effectivity</u> |
| | M20C | 1976 thru 20-0009, 20-0011 thru 20-1156 |
| | M20D | 101 thru 260 |
| | M20E | 101 thru 21-1170 |
| | M20F | 660003 thru 22-1223 |
| | M20G | 680001 thru 700006 |

TIME OF COMPLIANCE: At owner's discretion.

INTRODUCTION: There have been instances where the roll pin retaining the interior cabin door handle has sheared, leaving egress from the aircraft to the ingenuity of the pilot. We, therefore, recommend the following modification and door handle replacement be accomplished.

INSTRUCTIONS:

1. Remove cabin door inside handle and handle shaft assembly. (Note: Shaft removal is not absolutely necessary, but is recommended.)

| <u>Shaft Assy Part No.</u> | <u>Model</u> | <u>Serial No. Effectivity</u> |
|--------------------------------|--------------|---|
| 310115-1 | M20C | 1976 thru 2741, 2743 thru 2806 |
| | M20D | 101 thru 251 |
| | M20E | 101 thru 399, 401 thru 469 |
| | M20F | 660003 and 660004 |
| 310211-000 | M20C | 2742, 2807 thru 690026 |
| | M20D | 252 thru 260 |
| | M20E | 400, 470 thru 690030 |
| | M20F | 670001 thru 690037 |
| | M20G | 680001 thru 690011 |
| 310211-501 | M20C | 690027 thru 20-0009, 20-0011 thru 20-1156 |
| | M20E | 690031 thru 21-1170 |
| | M20F | 690038 thru 22-1223 |
| | M20G | 690012 thru 700006 |

2. Trim handle shaft $.30 + .030$ from center of roll pin hole. See Figure 1.



S.I. No. M20-39

Page 2 of 4

Instructions cont...

3. Grind corners on 310298-7 insert as required to fit inside handle shaft. See Figure 2.
4. Position 310298-7 insert in handle shaft with respect to levers as shown in Figure 3. Threaded end of insert to protrude .62 from end of shaft. Tungsten inert gas arc weld insert to shaft.

NOTE: Handle in closed position will be 5° above a horizontal plane. Owner Option - Disregard insert angular position; position handle to satisfy individual taste.

5. Re-install shaft if removed. Install 130271-19 finish washer. Install 310299-1 handle using AN526-832R8 screw and AN960-8L washer.

Parts List for
S.I. M20-38 Kit:

| <u>Part No.</u> | <u>Part Name</u> | <u>Quantity</u> |
|-----------------|----------------------------|-----------------|
| 310299-1 | Cabin Door Interior Handle | 1 |
| 310298-7 | Insert | 1 |
| 130271-19 | Finish Washer | 1 |
| AN526-832R8 | Screw | 1 |
| AN960-8L | Washer | 1 |



S.I. No. M20-39

Page 3 of 4

310115 -1
310211
310211-501
SHAFT ASSY

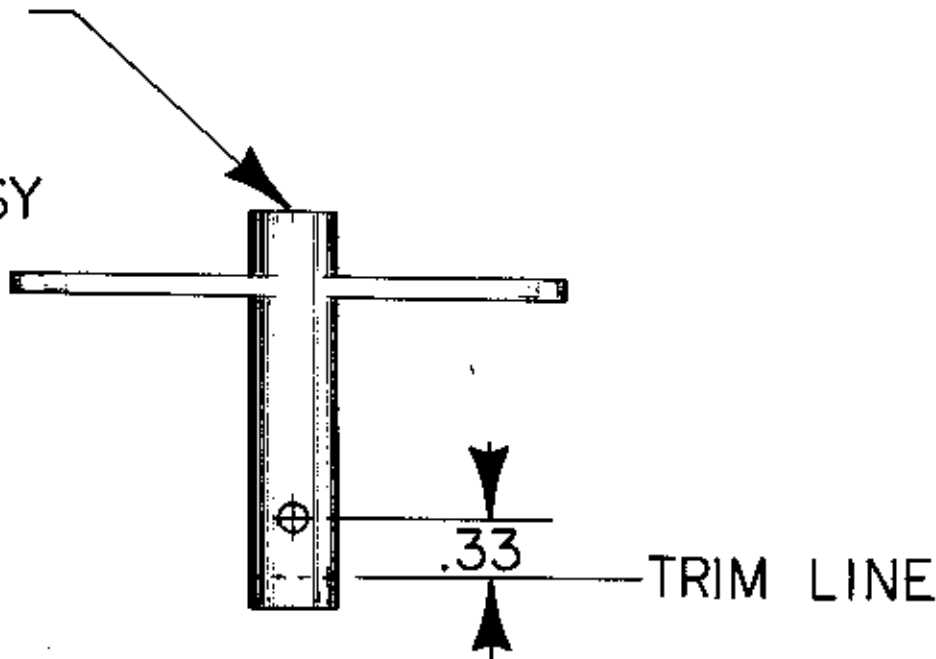


FIGURE 1

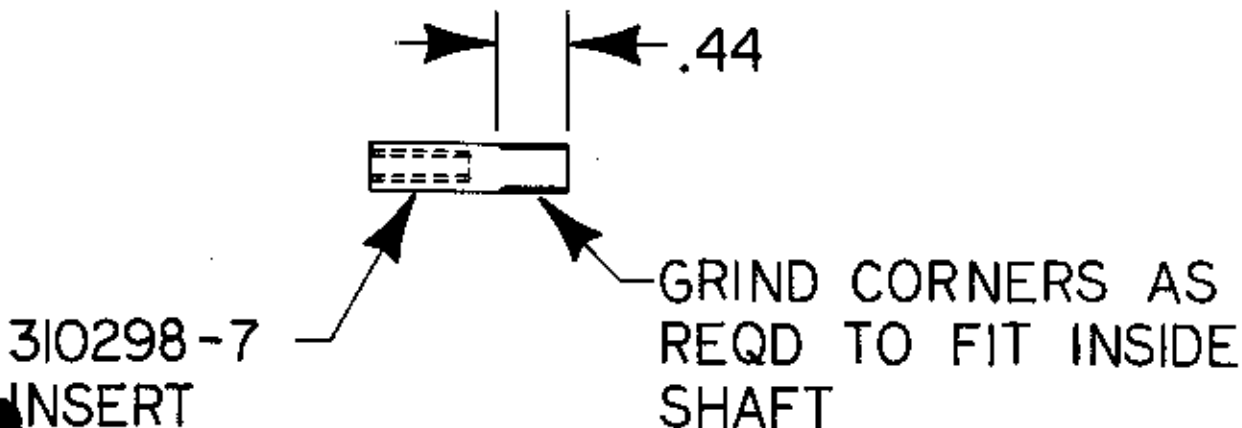


FIGURE 2



S. I. M20-39
Page 4 of 4

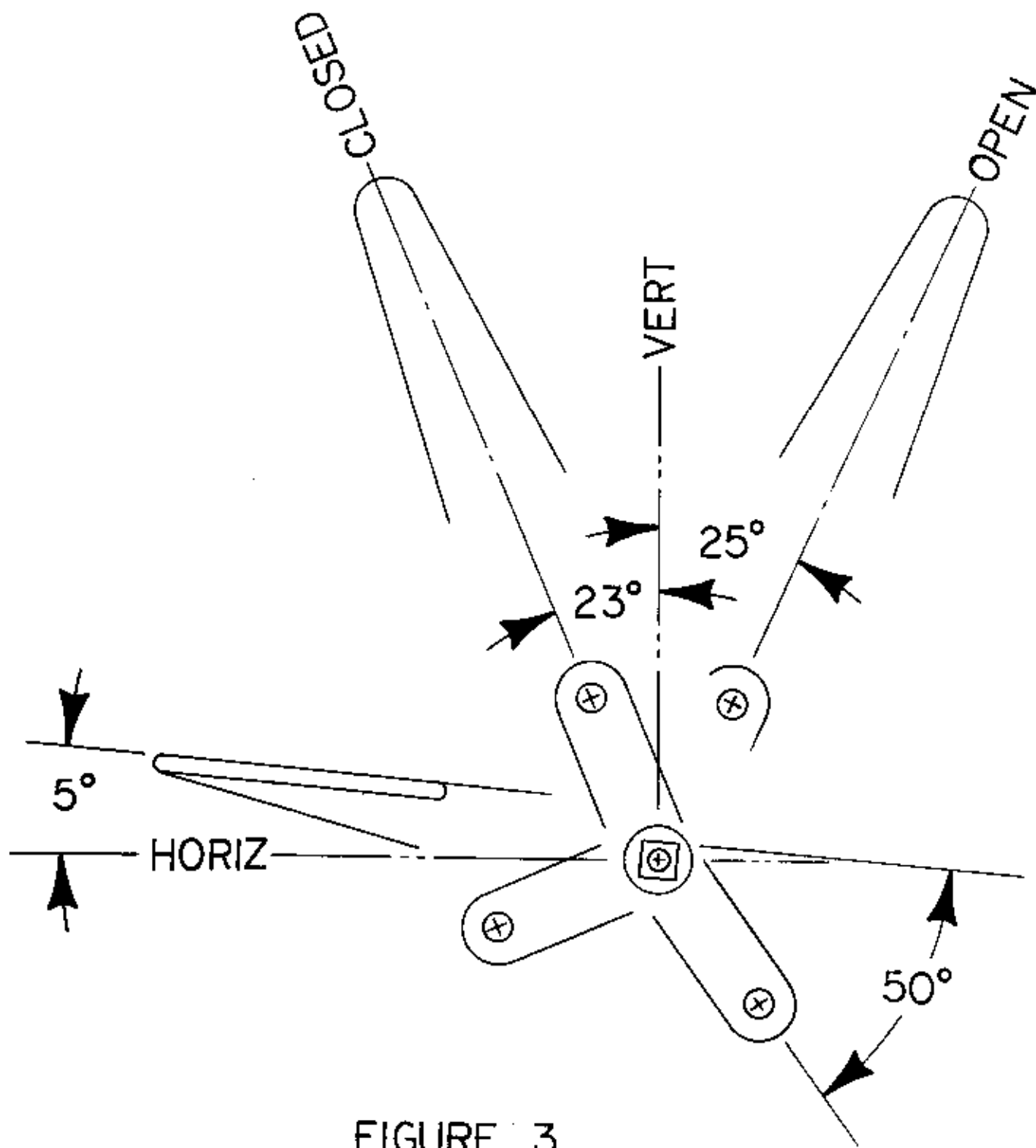


FIGURE 3